

Transportation from Kansai International Airport (KIX) to Osaka Station, Rihga Royal Hotel, GCO and Hotel NCB via **Kansai Airport Limousine Bus**

When you arrive on the first level of International arrival, go outside the building to Bus Stop #5 to take the Kansai Airport Limousine Bus to Osaka Station → Arrive in Osaka Station in 55 minutes → Take a Free Shuttle Bus to RIHGA ROYAL HOTEL → Walk to GCO through Rihga Royal Hotel Lobby → Keep walking west for another block along the river to arrive at Hotel NCB.

1. When you arrive at Kansai International Airport (KIX), you will go through the immigration, find your luggage and go through the customs area. This can take up to one hour after arrival depending on how busy the airport is and most of the time will be spent waiting in the line to go through the immigration.
2. When you exit the customs area, go outside the building to **Bus Stop #5** to take the **Kansai Airport Limousine Bus to Osaka Station** (See Figure 1 & 2).

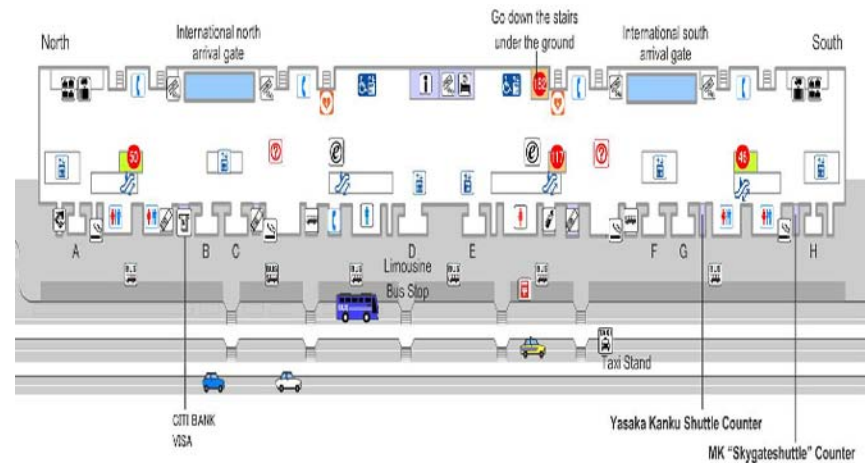


Figure 1. Kansai Airport Arrival Level Map



Figure 2. Bus Stop #5 for Airport Limousine Bus to Osaka Station



Figure 3. Limousine Bus Schedule from Kansai Airport

- Kansai Airport Limousine Bus (Figure 4) runs from 6:35. From 08:05, it runs every 20 minutes till 22:45. Figure 3 shows the daily timetable. One-way fare is 1,500 Yen and round-trip fare is 2,700 Yen. It is slightly more expensive compared to 1,160 Yen for Train. Bus tickets can be purchased using automated ticket machine behind the Bus Stop #5 (see Figure 5).



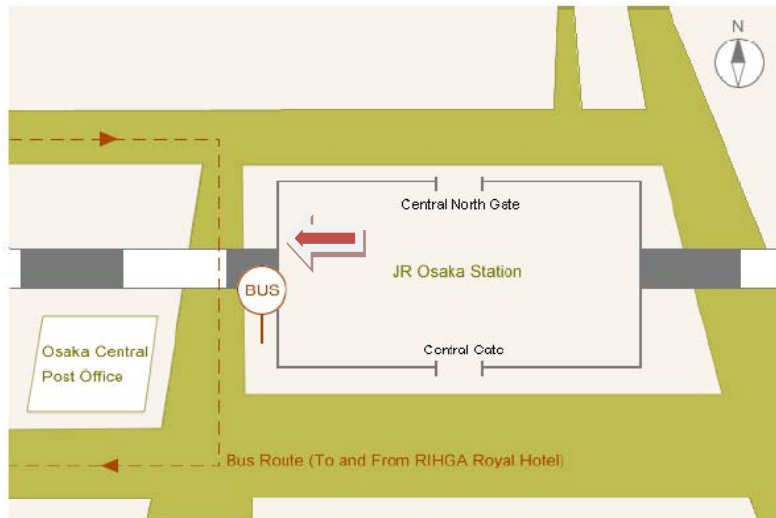
Figure 4. Airport Limousine Bus



Figure 5. Bus ticket machine

**Going to GRAND CUBE OSAKA, Rihga Royal Hotel, Hotel NCB**

4. If you are going to GCO, Rihga Royal Hotel, or Hotel NCB, you can take the free shuttle bus from Rihga Royal Hotel. The shuttle bus stop is located on the west side of Osaka Station (see Figure 6).



**Figure 6. Rihga Royal Hotel Shuttle Bus Stop in Osaka Station**

5. After getting off the Kansai Airport Limousine Bus, find the Rihga Royal Hotel Shuttle Bus Stop (see Figure 7 & 8).
6. From Osaka Station, the Shuttle Bus runs every 15 minutes from 7:25 to 10:00. It runs every 6 minutes between 10:00 and 21:00. From 21:00, it runs every 15 minutes until the last bus, which departs at 22:15.



**Figure 7. Hotel Shuttle Bus Stop Direction Sign**



**Figure 8. Rihga Royal Hotel Shuttle Bus**



Figure 9. Rihga Royal Hotel Shuttle Bus Stop (right side)

7. It takes about 10 minutes to Rihga Royal Hotel from Osaka Station. After arrival at Rihga Royal Hotel, if you have a reservation at Rihga Royal Hotel, you can simply walk into the lobby, go to the checkin desk and checkin. If your destination is NOMS 2010 Symposium Venue (GCO), then go through the Rihga Royal Hotel lobby and get to GCO which is right next door to the hotel (see Figure 10 & 11).
8. If you want to go to Hotel NCB, which is located one block West of GCO, walk along the river for 5 minutes after passing GCO. You will find Hotel NCB located on the left side of the street (see Figure 12).



Figure 10. Hotel Lobby to GCO



Figure 11. GCO



Figure 12. Hotel NCB